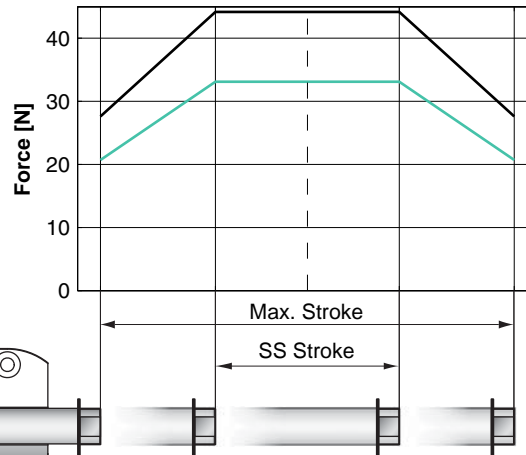
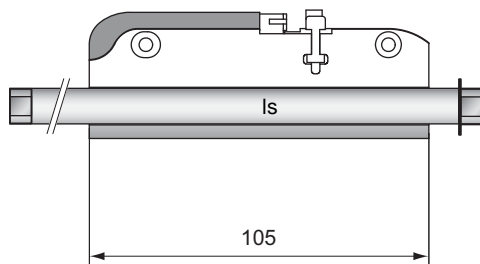


Peak Force: 39-44N
Max. Stroke: 50/90/110/140
 210/270/340/400
 500/680/770mm



Standard Winding:
 — E1100, 72VDC & E1001, 72VDC
 — E100, 48VDC

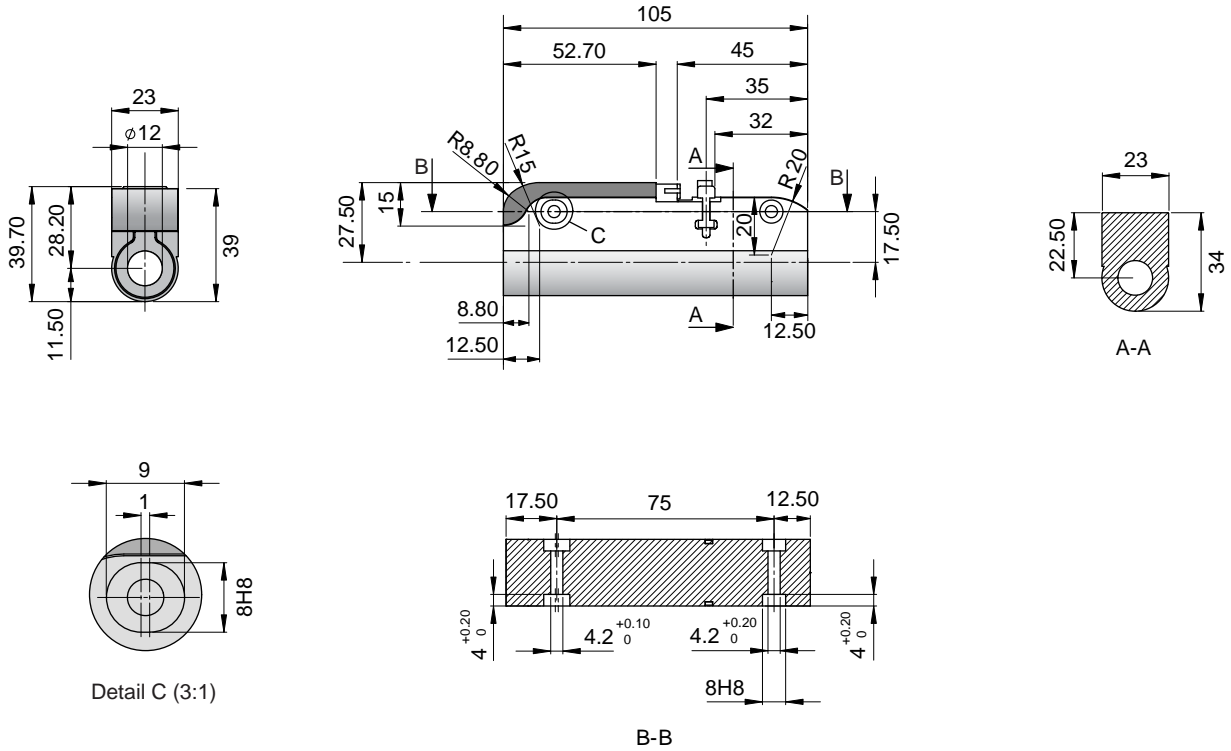


Dimensions in mm

Motor Specification

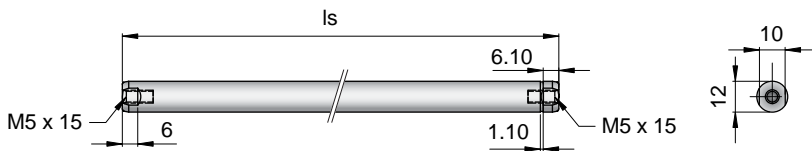
		P02-23Sx80										
Stroke Max.	mm (in)	50	90	110	140	210	270	340	400	500	680	770
Stroke SS	mm (in)	10	30	50	80	150	210	280	340	440	620	710
Slider Diameter	mm (in)	12 (0.47)										
Slider Length	mm	130	170	190	270	290	350	420	480	580	760	850
Slider Mass	g	89	118	135	171	220	271	330	380	465	615	690
Peak Force E1100/E1001	N (lbf)	39**/44 (8.7**/9.9)										
Peak Force E100	N (lbf)	29**/33 (6.5**/7.4)										
Cont. Force	N (lbf)	8**/9 (1.7**/2.0)										
Cont. Force Fan cooling	N (lbf)	14**/16 (3.2**/3.7)										
Border Force	%	71/63										
Force Constant	N/A (lbf/A)	9.7**/11.0 (2.17**/2.48)										
Max. Current @ 72VDC	A	4.0										
Max. Current @ 48VDC	A	3.8										
Max. Velocity @ 72VDC	m/s (in/s)	6.9**/6.0 (279**/236)										
Max. Velocity @ 48VDC	m/s (in/s)	4.6**/4.0 (180**/157)										
Phase Resist. 25/80 °C	Ohm	10.3**/12.5										
Phase Inductance	mH	1.4										
Thermal Resistance	°K/W	7.0										
Thermal Time Const.	sec	1600										
Stator Diameter	mm (in)	23 (0.91)										
Stator Length	mm (in)	105 (4.13)										
Stator Mass	g (lb)	245 (0.54)										
Position Repeatability	mm (in)	±0.05 (±0.0020)										
Linearity	%	±0.70	±0.45	±0.40	±0.35	±0.30	±0.25	±0.25	±0.25	±0.20	±0.20	±0.20
Position Rep. with ES	mm (in)	±0.01 (±0.0004)										
Linearity with ES	mm (in)	±0.01 (±0.0004)										

Stator



P02-23Sx80

Slider



ls
 130mm 170mm 190mm 270mm
 290mm 350mm 420mm 480mm
 580mm 760mm 850mm

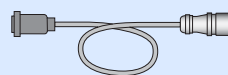
Linear Motor		Stator		Slider	
Type	Art.No	Type	Art. No.	Type	Art No.
P02-23Sx80/10x50	-->			& PL01-12x130/80	0150-1399
P02-23Sx80/30x90	-->			& PL01-12x170/120	0150-1301
P02-23Sx80/50x110	-->			& PL01-12x190/140	0150-1302
P02-23Sx80/80x140	-->	PS02-23Sx80-F	0150-1272	& PL01-12x270/170	0150-1307
P02-23Sx80/150x210	-->			& PL01-12x290/240	0150-1320
P02-23Sx80/210x270	-->			& PL01-12x350/300	0150-1322
P02-23Sx80/280x340	-->			& PL01-12x420/370	0150-1324
P02-23Sx80/340x400	-->			& PL01-12x480/430	0150-1372
P02-23Sx80/440x500	-->			& PL01-12x580/530	0150-1355
P02-23Sx80/620x680	-->			& PL01-12x760/710	0150-1366
P02-23Sx80/710x770	-->			& PL01-12x850/800	0150-1365

Connectors

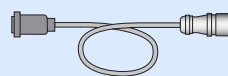
Motor Connector Wiring

Pin 1	Phase 1+
Pin 2	Phase 1+
Pin 3	Phase 2+
Pin 4	Phase 2+
Pin 5	Sine
Pin 6	Cosine
Pin 7	GND
Pin 8	Temp
Pin 9	+5V
Pin 10	Phase 1-
Pin 11	Phase 1-
Pin 12	Phase 2-
Pin 13	Phase 2-

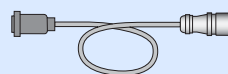
Accessoires



Standard Cable S. 306



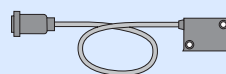
High Flex Cable S. 306



Robotic Cable S. 306



Servo Controller:
E100, E1001, E1100, B1100 S. 221



Optional Linear Encoder S. 324